

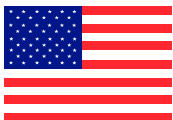
Virtual Tech

User Manual



TRANSLITE

www.translitetrailers.com
1-877-752-0058



Contents

Introduction	3
Product Registration	4
Warranty	5
Safety Information	6
Installation	7
Specifications	7
Operation	8
Maintenance	10
Troubleshooting	11

MODEL: _____

SERIAL NO: _____

DATE PURCHASED: _____

Introduction

Congratulations on the purchase of your new Translite Virtual Tech. It will provide you with many years of dependable service and performance.

The Virtual Tech has been designed to be sturdy, simple, and easy-to-use. Please read this manual in its entirety prior to using the equipment to ensure safe and trouble-free operation.

If you have any questions or comments, please feel free to contact us.

1-877-752-0058



Product Registration

In order to receive the following limited product warranty, please mail or fax this registration form within 90 days of purchase date to:

Translite Trailers, LLC
P.O. Box 37
Central City, KY 42330
Fax: 1-270-754-3202

Name _____ **Company** _____

Address _____

City _____ **State** _____ **Zip** _____

Telephone _____ **Fax** _____

E-mail Address _____

Product(s) Model Number _____

Serial Number(s) _____

Purchase Date _____



Limited Warranty

Disclaimer, and Limitation of Remedy

NOTE THE LIMITED WARRANTY DOES NOT COMMENCE UNTIL DATE THE PRODUCT REGISTRATION FORM IS RECEIVED, WHICH MUST BE WITHIN 90 DAYS DATE OF PURCHASE.

Subject to the limitations and disclaimers set forth herein, Translite Trailers, LLC ("Translite") hereby warrants the machinery sold to you (the Buyer) for one year from delivery to your place of business against defects in workmanship and all materials except chains, pulling accessories, hydraulic pumps and cylinders. Chains and pulling accessories include a 90 day warranty while hydraulic pumps and cylinders carry their original factory warranty and Translite makes no warranty on said equipment. This warranty does not cover any deterioration caused by normal wear and tear or lack of or improper maintenance of the machinery, nor the expense of normal maintenance service to the machinery.

Translite shall decide, in its sole discretion, whether to send a call tag to pick up the claimed defective item. You are obligated to return any claimed defective parts to Translite's place of business in Central City, Kentucky, and Buyer shall be solely responsible for the associated shipping charges. Translite will bill you for the replacement part when it is shipped to you, and Translite will issue a credit for the replacement part once Translite has received and inspected the claimed defective part and determined it is covered by this warranty. If Translite determines that the claimed defective part is in proper working condition, or the part has been damaged due to abuse or misuse, or is otherwise not covered by this warranty, Translite will bill you the billed cost of the replacement part, plus the associated shipping cost. If Translite determines that the claimed defective part is covered by this warranty, Translite shall replace or repair the part, at Translite's option, free of charge. **THE OBLIGATION OF TRANSLITE UNDER THIS WARRANTY IS LIMITED, AT TRANSLITE'S OPTION, TO REPAIRING, REWORKING, OR REPLACEMENT OF THE CLAIMED DEFECTIVE PART, AND THIS REMEDY IS YOUR SOLE REMEDY.**

This warranty is void if the machinery has been tampered with, modified, altered, or operated with parts other than those supplied or recommended by Translite. Use of an air pump is determined to be incorrect use of the machine and will void the warranty.

Translite does not warrant this machinery to meet requirements of any safety codes of any state, municipality or other jurisdiction, and you assume all risk and liability whatsoever resulting from the use thereof whether used singularly or in conjunction with other machinery or apparatus.

Any change in materials, design, or performance intended to improve any product of Translite shall not obligate Translite to modify any previously manufactured equipment or inform you of any such change.

TRANSLITE AND YOU (AS BUYER) AGREE THAT TRANSLITE HAS MADE NO EXPRESS OR IMPLIED WARRANTIES OTHER THAN THOSE CONTAINED IN THIS AGREEMENT, AND THAT TRANSLITE HAS MADE NO IMPLIED WARRANTY OF MERCHANTABILITY OR FITNESS FOR A PARTICULAR PURPOSE.

TRANSLITE LIABILITY IN CONTRACT, IN TORT (NEGLIGENCE, STRICT LIABILITY, OR ANY OTHER THEORY), UNDER ANY WARRANTY, OR UNDER ANY OTHER LEGAL OR EQUITABLE THEORY, SHALL NOT EXCEED THE PURCHASE PRICE PAID BY BUYER, AND UNDER NO CIRCUMSTANCE SHALL TRANSLITE BE LIABLE FOR SPECIAL, INDIRECT, INCIDENTAL, OR CONSEQUENTIAL DAMAGES. THE AMOUNT OF THE PURCHASE PRICE OF THE EQUIPMENT IS DETERMINED IN PART BY THE FACT THAT BUYER HAS AGREED TO SO LIMIT SELLER'S LIABILITY.

Safety Information

- ❖ **IN CASE OF EMERGENCY, release hydraulic pressure by pushing up and turning dark red master unloader valve.**
 - ❖ **Keep fingers clear of lift plates during operation.**
1. All operators should read the user's manual prior to use.
 2. Operate only one (1) Joy Stick Control at a time.
 3. Always ensure area is clear prior to lowering or raising the lift.
 4. Before operating lift, be sure the vehicle is secured either by wheel chocks or safety chains to prevent accidental rolling or other movement.
 5. Do not overload your lift with a vehicle larger than 8,500 lbs.
 6. Never place hands or feet under vehicle or lift when in operation.
 7. Keep oil and other slippery materials cleaned from lift. This will decrease the chances of injury.
 8. Keep water, anti-freeze and other liquids away from hydraulic pump.
 9. Any individual not fully trained on proper use of the Virtual Tech should not be allowed to operate until instructions are provided.
 10. Do not allow water to stand in your work bay during operation.
 11. Inspect chains daily before use.
 12. Keep torches and welders away from chains.
 13. Use an authorized licensed electrician in case of electrical issues.
 14. Always use proper lock-out/tag-out procedures.
 15. When setting up pull down chains, pay close attention to hydraulic hose clearances. Chains moving while in contact with these hoses may damage operation.
 16. Pump pressure should never exceed 3,000 psi. Warranty may be voided should this occur.

Installation

Installation and Set-up of your new Virtual Tech is relatively simple. The following steps will guide you through the correct process. Remember, if you have ANY difficulties or questions, please give us a call at 1-877-752-0058.

1. You are installing a piece of equipment that will be around for many, many years. Take the extra time to install it correctly.
2. Install your Virtual Tech on a level concrete floor.
3. Allow a sufficient area to walk around each side of the lift.
4. The hydraulic power unit requires a 220V/30A circuit to operate. If possible, a separate circuit should be dedicated to the power unit. Connecting the power unit to a circuit that is already under a load from shop lights, receptacles or any other requirement may cause the unit to be underpowered or circuit protection to fail.
5. Inspect machine for leaks or damaged parts. Shipping damage can occur.
6. Check all bolts, nuts, hydraulic cylinders and welds before proceeding with use.
7. Examine all functions of the lift prior to operating with a vehicle.

Specifications

Length	16'
Length with Ramp	22'
Width	85"
Weight	4,000 lbs.
Lift Range	13" – 45"
Lift Capacity	8,500 lbs

Operation

Loading the Vehicle:

1. Attach the loading ramps onto the rack so they will line up with the vehicle's wheels.
2. Slowly pull onto the rack with winch keeping the vehicle as straight and centered as possible. A vehicle that is not centered could cause the unit to become unstable.
3. Secure vehicle by placing wheel chocks (*see figure #1*) or safety chains to prevent accidental rolling or other movement.
4. Make sure the vehicle is secure and perimeter is clear of obstructions. Use the leg lift joysticks to operate the hydraulic power unit in raising the rack to your desired level. This rack has multiple levels to allow you to work at the safest and most comfortable position. You will hear the safety arms fall into each of the corresponding slots as the rack is raised.
5. Once you have the rack at your desired level, visually confirm that safety mechanisms are properly seated in the slots and lower the rack until the safety mechanism is secured (*see figure #2*). If it is necessary to raise the vehicle to a higher position, simply raise to the next position and again insure that the safety mechanisms are properly seated and secure.



Figure 1

Wheel chocks securing vehicle.



Figure 2

Front view of the safety mechanism.

Virtual Tech Operation:

1. Attach the supplied brackets to the vehicle in the area you wish to manipulate (*see figure #3*). Before fastening the brackets, be sure you are positioned so as to be able to adjust the pulling cylinders into position directly beneath the intended pulling area.
2. Once you determine which area of the vehicle you wish to manipulate, use the locking joysticks to energize the pump until the area of the vehicle is pulled to the desired measurement. It is important that you are constantly monitoring the movement of the vehicle to insure against unexpected binding or clearance problems. Special attention needs to be used to ensure pull down cylinder hoses or connectors do not come into contact with the chains (hoses can be loosened and repositioned if necessary).
3. Repeat Step 2 for the other areas of the vehicle. Keep in mind that any subsequent adjustments may cause movement in areas of the vehicle that was previously manipulated. If this happens, you simply go back to that area and re-adjust to the desired measurement.
4. To load suspension with push platforms for each wheel (*see Figure #4*), use the appropriate hand control pendant buttons.



Figure 3
Attachment bracket



Figure 4
Push Platforms in operation

Unloading Vehicle:

1. Check to make sure there are no parts, tools or obstructions under the rack.
2. Keep all persons a safe distance away as the rack is lowered.
3. Attach ramps to the rack so that they are in line with the wheels.
4. Ensure a safety chain is attached to the vehicle and chocks are removed before lowering rack.
5. Using the hand held controller, raise the rack until the unlatching mechanism causes the safety arm to disengage (*see figure #5*), then lower the rack.
6. Lower the rack while continually checking that there are no obstructions.
7. If for any reason you wish to stop the rack at any level before it reaches the floor, you must go down past the desired level and then raise it back up to engage the safety arm.
8. Once the rack is completely on the floor, pull the vehicle off with the winch attachment.



Figure 5
Disengaging safety mechanism

Maintenance

Daily:

Check all chains daily for damage, cracks, etc. Do not use them for any task should they be damaged in any way. Pulling with damaged equipment could result in injury or death.

Weekly:

Check all hoses weekly for wear. Also, examine system for proper fluid level as the time hoses are checked. Only use light weight hydraulic fluid (AW 32).

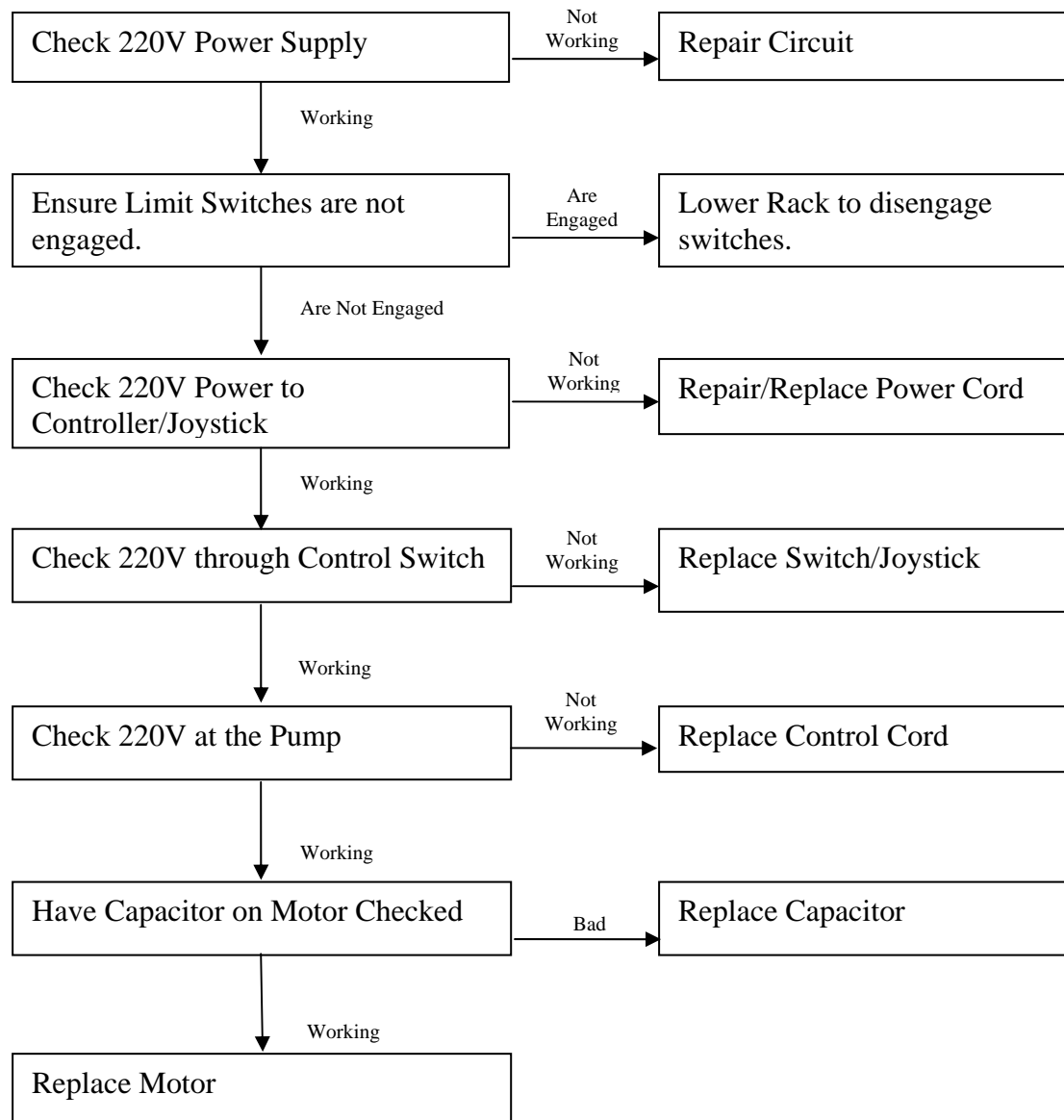
Monthly:

Grease all pivot points on a monthly basis.

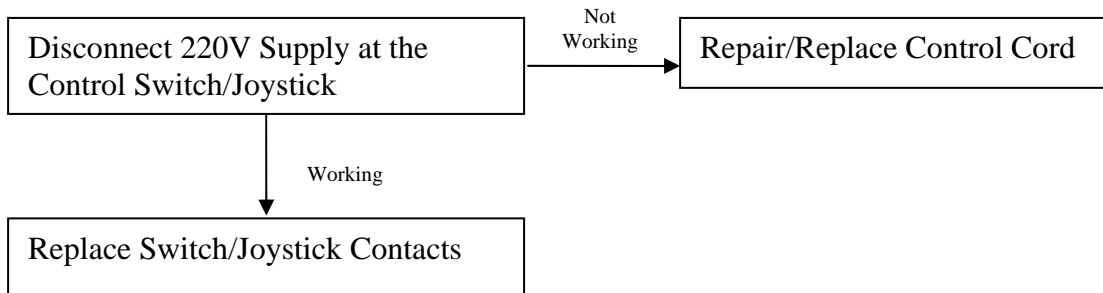
Troubleshooting

A few of the more common operation problems are listed below and simple directions of how to fix them. If the suggestions here do not help, or if you need further assistance with your troubleshooting, don't hesitate to give us a call at 1-877-752-0058.

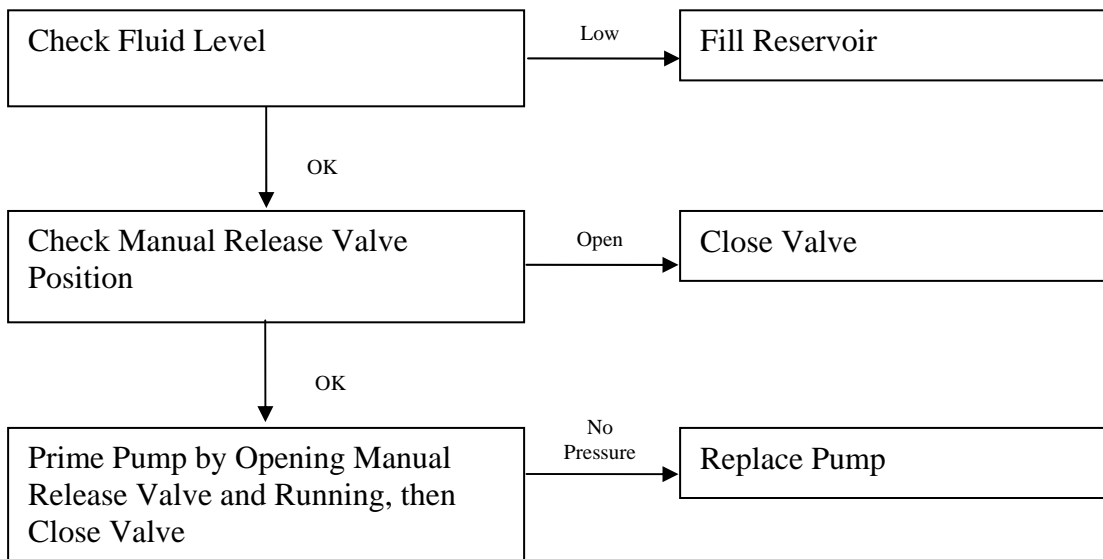
Pump Will Not Run:



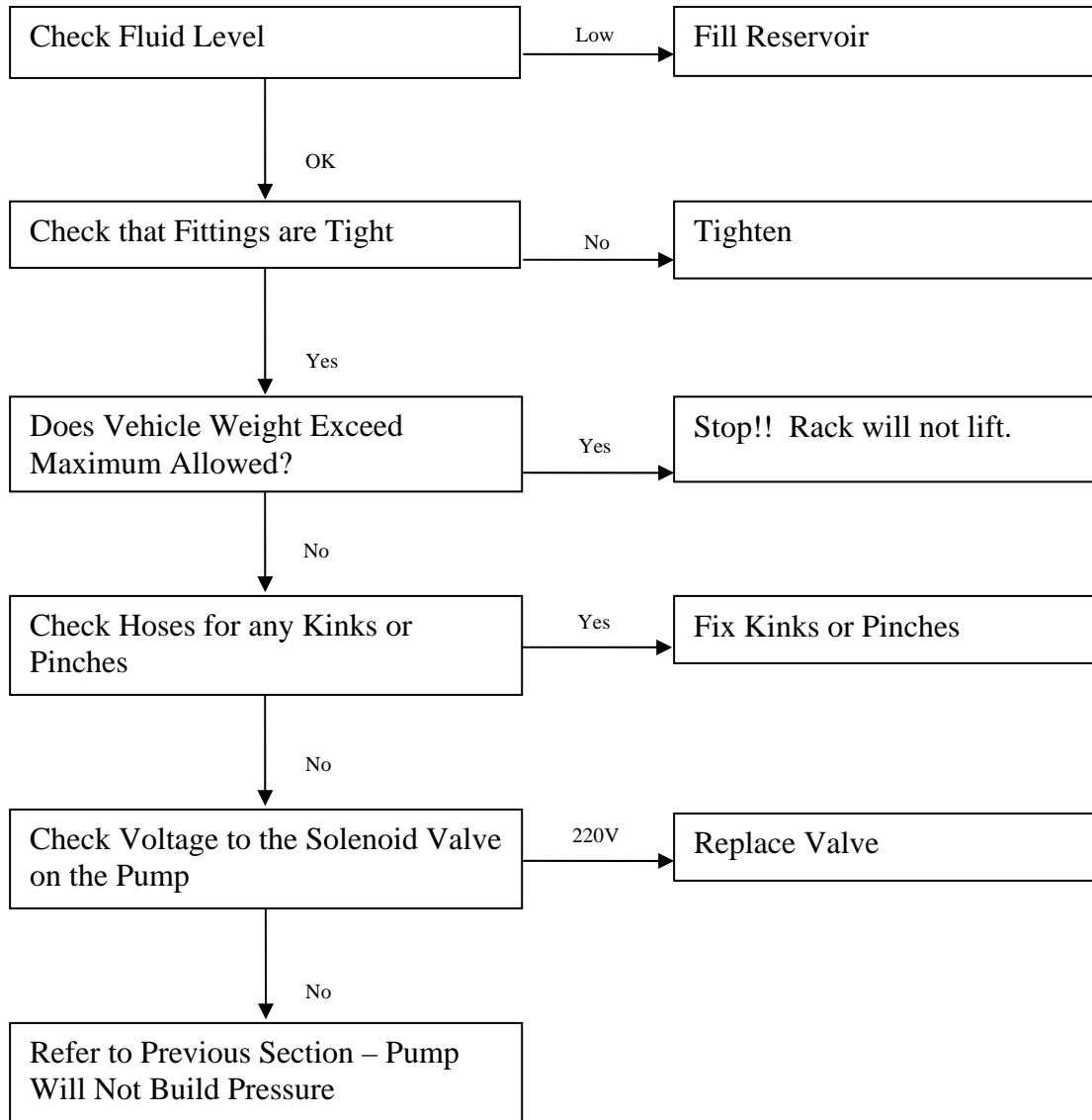
Pump Will Not Shut Off:



Pump Will Not Build Pressure:



Rack Will Not Lift:



Pump Pressure Will Not Release / Rack Will Not Go Down:

